

SCOTSMAN

COUNTER TOP ICE DISPENSER

IS160 / IS220



IS160

Storage Capacity

	lbs./kg.
IS160	160/70
IS220	220/100

DEPENDABLE PERFORMANCE IN ANY CONDITION

- 160 lbs. of storage capacity in a 22" width or 220 lbs. of storage in 30" width.
- Stainless steel exteriors.
- Foam-insulated polyethylene bin reduces ice meltage and will not rust.
- Quick and accurate dispensing of ice is achieved by an innovative rotor design.
- Accommodates all cup sizes.

WARRANTY *See your dealer for complete warranty details.*

- 2 years parts on all components.
- 1 year labor.

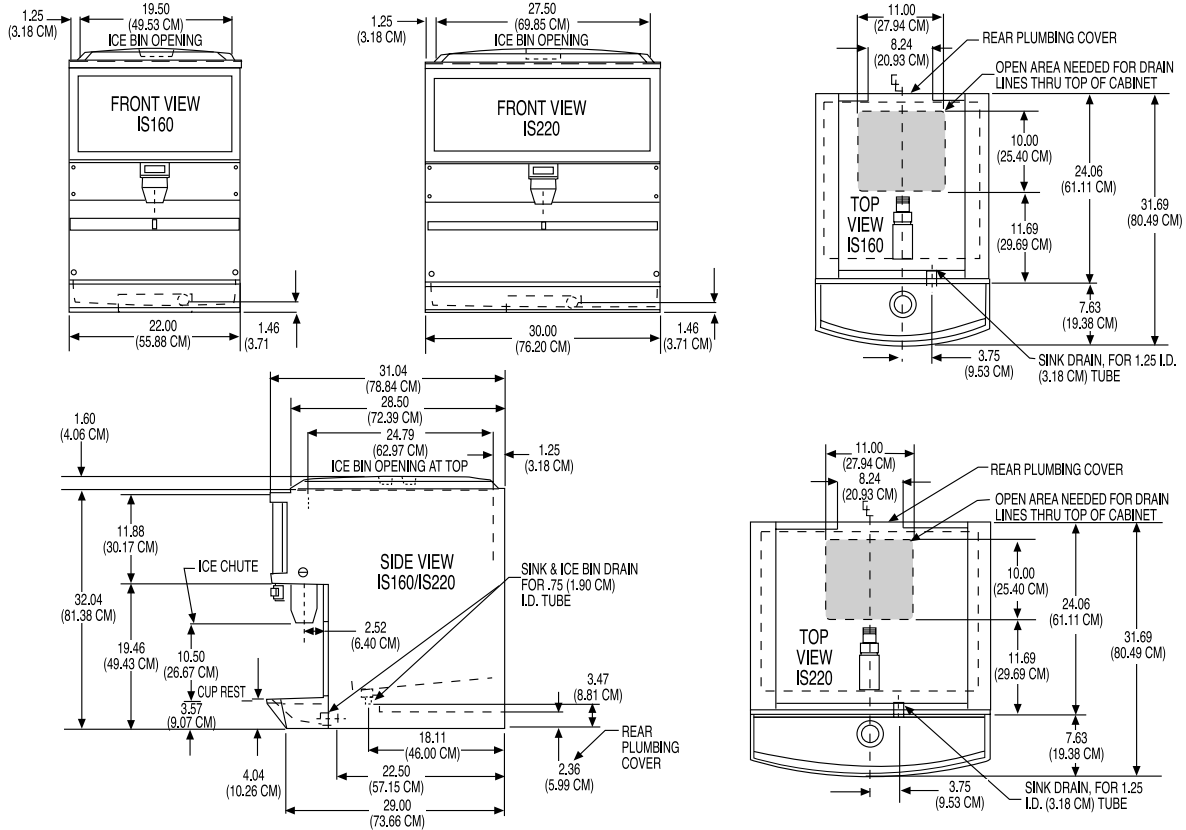


IS220

This product qualifies for the following listings:



Dispensers Specifications



All models:		Dimensions: W x D x H	Unit: IS160 22" x 32" x 34"		IS220 30" x 32" x 34"	
Model Number	Storage Capacity (lbs.)	Basic Electrical Volts/Hz/Phase	Actuation	Min. Circuit Ampacity	Max. Fuse Size	Shipping Weight
IS160S-LF-1A	160/70	115/60/1	Lever	2	15	130
IS160S-BF-1A	160/70	115/60/1	Button	2	15	130
IS220S-LF-1A	220/100	115/60/1	Lever	2	15	180
IS220S-BF-1A	220/100	115/60/1	Button	2	15	180

OPTIONS:

- KADUN2: mounting adaptor for 22" cuber (add 3" to total height)
- KADCM2: mounting adaptor for 30" cuber (add 3" to total height)
- KLP5: 4" leg kit

Scotsman's ice machines are not designed for outdoor installations. Scotsman remote condensers are designed for outdoor installations.

Machine requires voltage indicated on rating name plate. Failures caused by improper voltage are not considered factory defects. Extended periods of operation at temperatures exceeding limitations constitutes misuse under the terms of Scotsman Manufacturer's Limited Warranty, resulting in a loss of warranty coverage. Specifications and design are subject to change without notice.

Consult Your Local SCOTSMAN Representative At:

YOU'LL VALUE THE DIFFERENCE™

775 Corporate Woods Parkway • Vernon Hills, IL 60061 • 1-800-SCOTSMAN • (847) 913-9844
 Visit our website at: www.scotsman-ice.com • E-mail: customer.service@scotsman-ice.com